

# CTM-MS3

Universal Tilting Mount for Flat-Panels up to 300 lb./136 kg

Color: Black

Weight 39.00 lb. | 17.7 kg

Weight Capacity 300 lb. | 136.1 kg

Width 36.66 in. | 931 mm

Height 30.10 in. | 764.5 mm

Depth 3.35 in. | 85 mm

Mounting Pattern 200 x 200 (Min) - 900 x 735  
(Max) mm

Display Range 55.00 - 68.00 in

Tilt +12.00° / -12.00°

Downloads at Mounts.com

 [BID SPEC](#)



[Data Sheet](#)



[Bid Specification Document](#)



[Installation Manual](#)



[Dimensional Drawing](#)



[CAD File](#)



[High Resolution Image](#)



300 lb.



+30.10



+12.00°  
-12.00°



3 in



200 x  
200 min.



900 x  
735 max.



55-68 in

## DESCRIPTION

The CTM-MS3 mounts to walls, floor stands, carts and ceiling adapters. Premier's universal series mounts feature the innovative patented Griplates™ (US Patent number 8,035,757 B2) support the flat-panel and hold the display tight on its mounting brackets. The patented Clevis tilting mechanism allows 12° of continuous tilt and built-in lateral shift makes precise alignment effortless.

## FEATURES

- Mounts to walls, floor stands, carts and ceiling adapters
- Patent-pending Griplates™ support flat-panel displays and hold the display tight on its mounting brackets
- Lateral shift for precise vertical alignment
- Features patented Clevis tilt mechanism
- Twelve degrees of continuous tilt
- Open design provides cable and power box access
- Extensive hardware pack

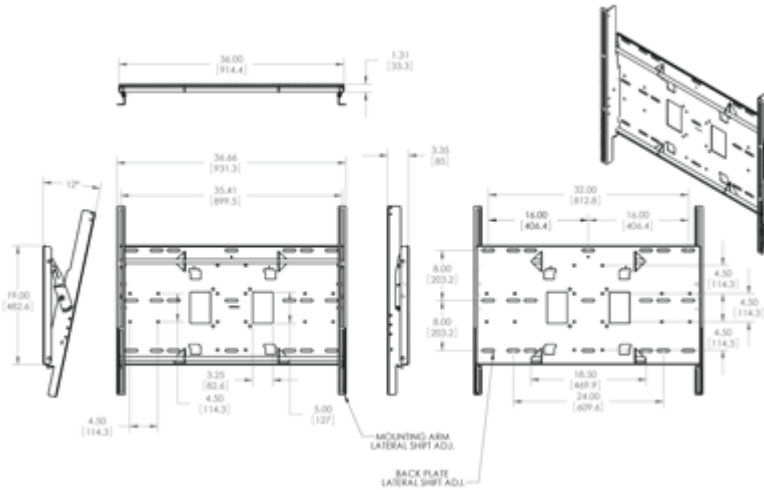




# CTM-MS3

Universal Tilting Mount for Flat-Panels up to 300 lb./136 kg

DOWNLOAD FULL SIZE CAD FILES AND DIMENSIONAL DRAWINGS AT [MOUNTS.COM](http://MOUNTS.COM)



## ACCESSORIES FOR CTM-MS3



### PSD-S

Single-Display Adapter with 1.5 in. Swivel Coupler



### PCB-CSL1

Steel Cable Locking System



### PSD-D

Back-to-back-display Adapter with 2 inch Swivel Couple



### CTM-MAC

Mac mini™ adapter for CTM Series



### CTM-MAC2

Mac mini™ Adapter for CTM, PCM and P-Series Tilt Mounts

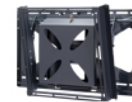
[MORE AT MOUNTS.COM](http://MOUNTS.COM)

## SIMILAR PRODUCTS



### CTM-MS3

Universal Tilting Mount for Flat-Panels up to 300 lb./136 kg



### GB-MS2

Tilting Flat-Panels Mount for Displays up to 175 lb. and Integrated Storage



### PRC-LA

Flat-Panel Mount with 1.5 in. NPT adapter



### CTM-MS2

Tilting Mount for Flat-Panels up to 175 lb./79 kg



### PTM-B

VESA Tilt and Pivot Mount for Flat-Panels



### CTM-MS1

Tilting Mount for Flat-Panels up to 160 lb./73 kg

[MORE AT MOUNTS.COM](http://MOUNTS.COM)



World Headquarters | 1321 S. State College Blvd., Fullerton, CA 92831 | 800.368.9700 USA | F 800.832.4888 | [www.mounts.com](http://www.mounts.com)  
Europe Office | Unit 3, The Moorings Business Park, Channel Way | Longford, Coventry, CV6 6RH, UK | +44 (0) 2476 644105 | F +44 (0) 2476 64416  
© 2013 PREMIER MOUNTS | Rev.01 | 10.2011